

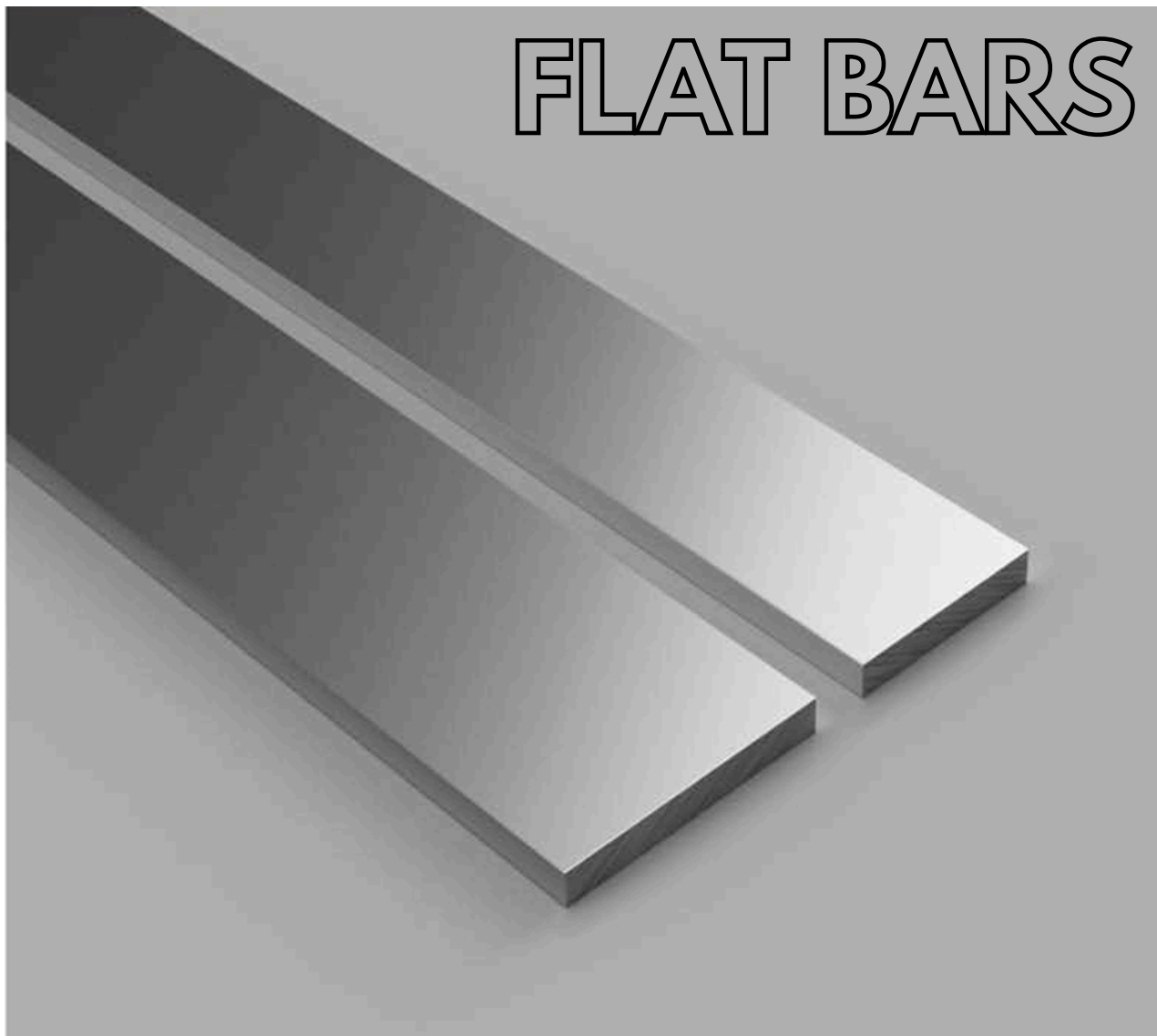
ALUMINIUM CATALOGUE



VALVENOK

FLOW POWER IN MOTION

FLAT BARS



Aluminium Flat Bars are general purpose extrusions that can be used in many applications.

Our Flat Bars are available in alloy grades 6063 T6 and 6061 T6 as standards with the larger bars being predominantly 6061 T6 due to the alloy's structural properties. These bars can be characterised as being lightweight with a smooth finish and defined edges. Both alloys provide good corrosion resistance and are excellent candidates for most processing techniques.

We supply all our Flat Bars in a standard length of 6m with the option to 'cut-to-size'

DIMENSIONS (mm)	ALLOY	MASS (per/m)	LENGTH (m)
10.00 x 4.00	6063T6	0,108	3,000
12.70 x 3.18	6063T6	0,109	6,000
12.70 x 6.36	6061T6	0,218	6,000
15.00 x 2.00	6063T6	0,080	3,000
15.80 x 3.18	6063T6	0,136	6,000
19.06 x 3.18	6063T6	0,164	6,000
19.06 x 4.78	6063T6	0,247	6,000
19.06 x 6.36	6061T6	0,328	6,000
25.40 x 3.18	6063T6	0,218	6,000
25.40 x 4.78	6063T6	0,329	6,000
25.40 x 6.36	6061T6	0,437	6,000
25.40 x 9.52	6061T6	0,656	6,000
25.40 x 12.70	6061T6	0,874	6,000
31.76 x 3.18	6063T6	0,272	6,000
31.76 x 4.78	6063T6	0,411	6,000
31.76 x 6.36	6061T6	0,547	6,000
38.10 x 3.18	6063T6	0,328	6,000
38.10 x 6.36	6061T6	0,656	6,000
38.10 x 9.52	6061T6	0,985	6,000
38.10 x 12.70	6061T6	1,311	6,000
50.80 x 3.18	6063T6	0,437	6,000
50.80 x 4.78	6063T6	0,656	6,000
50.80 x 6.36	6061T6	0,875	6,000
50.80 x 9.52	6061T6	1,310	6,000
50.80 x 12.70	6061T6	1,748	6,000
63.50 x 6.36	6061T6	1,094	6,000
76.20 x 1.60	6063T6	0,394	6,000
76.20 x 3.18	6063T6	0,656	6,000
76.20 x 6.36	6061T6	1,312	6,000
76.20 x 9.52	6061T6	1,965	6,000
76.20 x 12.70	6061T6	2,622	6,000
101.60 x 3.18	6063T6	0,875	6,000
101.60 x 6.36	6061T6	1,750	6,000
101.60 x 9.52	6061T6	2,621	6,000

An Aluminium Round Bars' shape lends itself to many different projects, particularly outdoors, where a high resistance to corrosion and mechanical strength are advantageous.

Our Aluminium round Bars are available in alloy grades 6061 T6 and 6082 T6/T7. These alloys provide excellent corrosion resistance and can be cut or welded easily with the correct equipment.

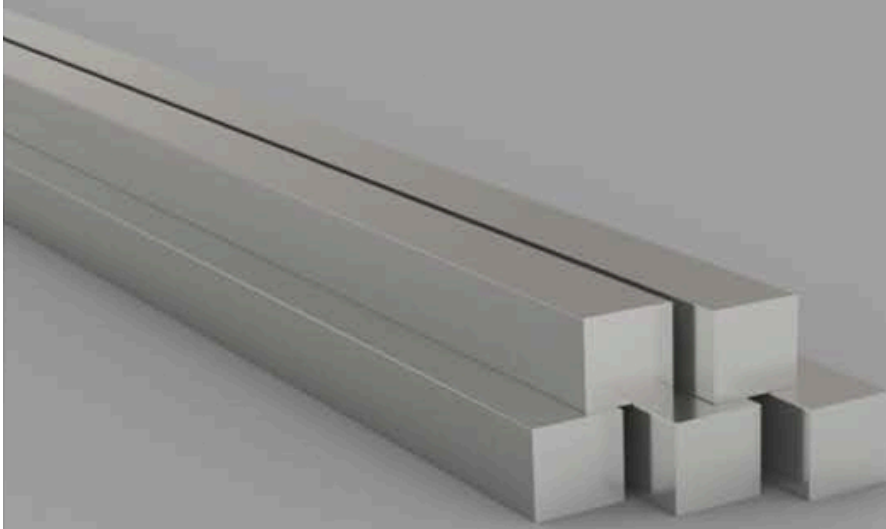
We supply our Round Bars in standard lengths of 6, 5 or 1 metre lengths, depending on the size (see table below). We offer a 'cut-to-size' service where required.

DIAMETER (mm)	ALLOY	MASS (per/m)	LENGTH (m)
4.70 mm	6061T6	0,047	5,000
6.00 mm	6061T6	0,077	5,000
7.94 mm	6082T6	0,134	5,000
9.52 mm	6082T6	0,193	5,000
9.52 mm	6082T6	0,193	6,000
12.70 mm	6082T6	0,343	5,000
12.70 mm	6082T6	0,343	6,000
15.80 mm	6082T6	0,535	5,000
15.80 mm	6082T6	0,535	6,000
19.06 mm	6082T6	0,772	5,000
19.06 mm	6082T6	0,772	6,000
25.40 mm	6082T6	1,330	5,000
25.40 mm	6082T6	1,330	6,000
31.70 mm	6082T6	2,145	5,000
31.70 mm	6082T6	2,145	6,000
40.00 mm	6082T6	3,405	5,000
40.00 mm	6082T6	3,405	6,000
50.80 mm	6082T6	5,493	5,000
50.80 mm	6082T6	5,493	6,000
65.00 mm	6082T6	9,000	1,000
70.00 mm	6082T6	10,438	1,000
76.20 mm	6082T6	12,369	1,000
90.00 mm	6082T6	17,255	1,000
101.60 mm	6082T6	21,989	1,000
115.00 mm	6082T6	28,172	1,000
125.00 mm	6082T6	33,285	1,000
130.00 mm	6082T6	36,001	1,000
140.00 mm	6082T6	41,753	1,000
152.60 mm	6082T6	49,606	1,000
165.00 mm	6082T6	57,996	1,000
176.00 mm	6082T6	65,986	1,000
190.00 mm	6082T6	76,901	1,000
200.00 mm	6082T6	85,209	1,000
250.00 mm	6082T6	133,140	1,000
300.00 mm	6082T6	191,721	1,000



ROUND BARS

SQUARE BARS



Aluminium Square Bars are general-purpose extrusions that can be used in many applications.

Our Square Bars are available in alloy grade 6082 T6, a high-strength alloy also known in the metal industry as a “structural alloy”. This material is good for both welding and machining and has excellent corrosion resistance, making it ideal for outdoor use.

DIAMETER (mm)	ALLOY	MASS (per/m)	LENGTH (m)
6.36 mm	6082T6	0,108	5,000
8.00 mm	6082T6	0,173	5,000
9.52 mm	6082T6	0,245	5,000
12.70 mm	6082T6	0,437	5,000
12.70 mm	6082T6	0,437	6,000
15.88 mm	6082T6	0,682	5,000
15.88 mm	6082T6	0,682	6,000
19.06 mm	6082T6	0,983	5,000
20.00 mm	6082T6	0,983	6,000
25.40 mm	6082T6	1,748	5,000
31.76 mm	6082T6	2,733	5,000
31.76 mm	6082T6	2,733	6,000
40.00 mm	6082T6	4,321	5,000
50.80 mm	6082T6	6,972	5,000
50.80 mm	6082T6	6,972	6,000
60.00 mm	6082T6	9,732	1,000

We supply our Aluminium Square Bars in a standard length of 5m with the option to ‘cut-to-size

Aluminium Rectangular Tubes are easily fabricated into cubic or box-type structures and are ideal components for building racks and window frames.

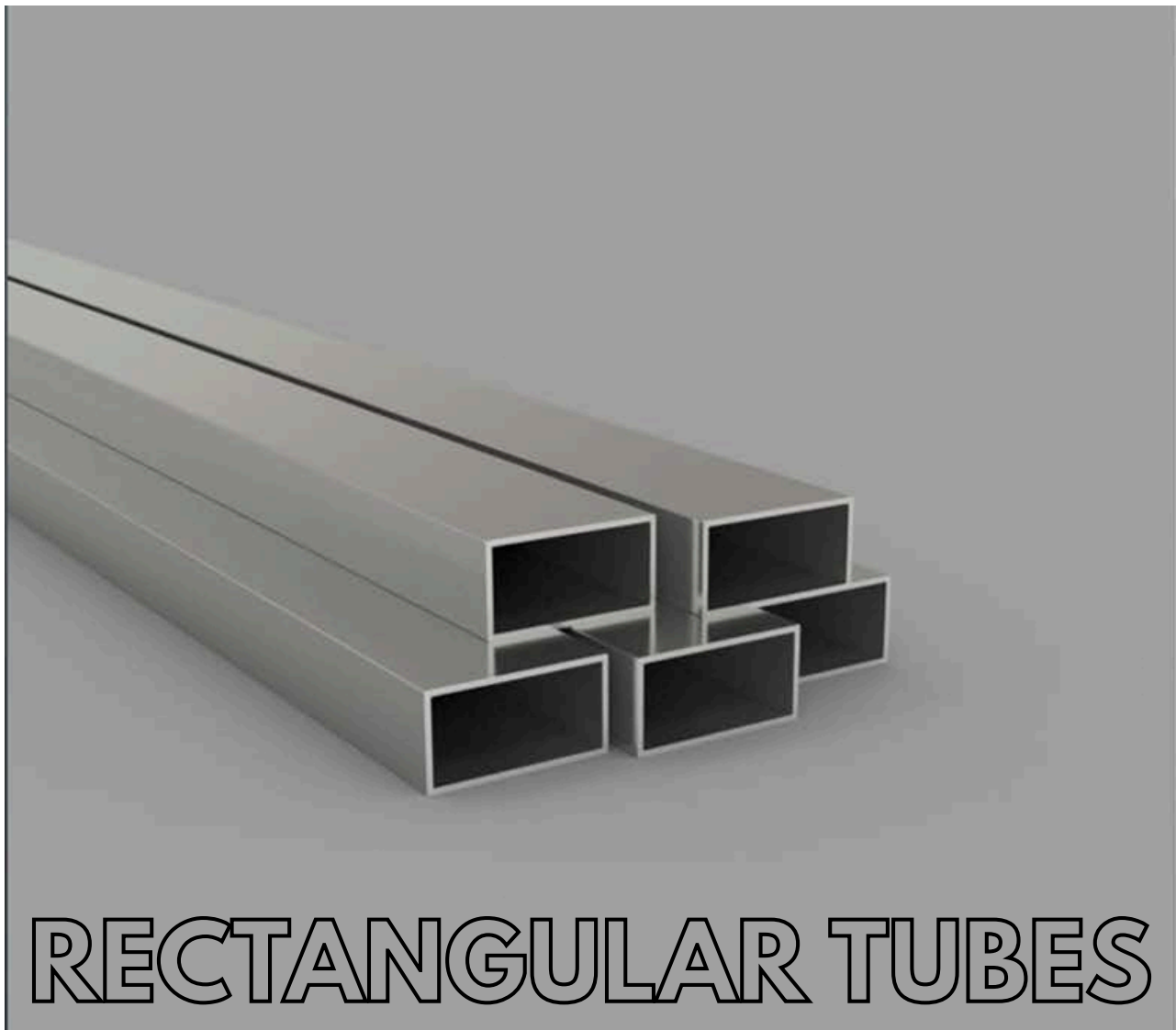
Our Rectangular Tubes are available in alloy grade 6063 T6, a medium-strength alloy also known as an “architectural alloy”. This material has excellent corrosion resistance, making it ideal for outdoor applications.

DIMENSIONS (mm)	ALLOY	MASS (per/m)	LENGTH (m)
18.00 x 12.00 x 1.20	6063T6	0,179	6,000
20.00 x 10.00 x 2.00	6063T6	0,282	6,000
40.00 x 20.00 x 1.20 RC Only	6063T6	0,350	6,000
50.80 x 25.40 x 2.00 RC or SC	6063T6	0,770	6,000
50.00 x 30.00 x 2.00	6063T6	0,823	6,000
75.00 x 25.00 x 1.60	6063T6	0,789	6,000
76.20 x 38.10 x 2.00	6063T6	1,191	6,000
100.00 x 30.00 x 3.00	6063T6	2,020	6,000
101.06 x 44.00 x 3.18	6063T6	2,408	6,000
100.03 x 50.00 x 3.18	6063T6	2,485	6,000
100.00 x 50.00 x 2.00	6063T6	1,583	6,000
150.00 x 50.00 x 3.00	6063T6	3,154	6,000
200.00 x 50.00 x 3.00	6063T6	3,967	6,000

Width x Height x Wall Thickness

Length

We supply our Aluminium Rectangular Tubes in a standard length of 6m with the option to ‘cut-to-size’





An Aluminium Round Tube's shape makes it an ideal extrusion for use in many building projects, particularly outdoors.

Depending on the size, our Aluminium Round Tubes are available in alloy grade 6063 T6 and 6061 T6 – medium strength alloys with great architectural properties. These alloys have excellent corrosion resistance, making them ideal for outdoor applications.

We supply our Aluminium Round Tubes in a standard length of 6m with the option to 'cut-to-size

DIMENSIONS (mm)	ALLOY	MASS (per/m)	LENGTH (m)
8.00 x 1.00 (6.00 – ID)	6063T6	0,060	6,000
9.50 x 1.22 (7.06 – ID)	6063T6	0,086	6,000
12.70 x 1.20 (10.30 – ID)	6063T6	0,119	6,000
12.70 x 1.60 (9.50 – ID)	6063T6	0,153	6,000
12.70 x 3.18 (6.34 – ID)	6063T6	0,257	6,000
15.80 x 1.62 (12.56 – ID)	6063T6	0,197	6,000
19.06 x 1.20 (16.66 – ID)	6063T6	0,185	6,000
19.06 x 1.62 (15.82 – ID)	6063T6	0,241	6,000
19.06 x 3.18 (12.70 – ID)	6063T6	0,430	6,000
22.20 x 1.22 (19.76 – ID)	6063T6	0,218	6,000
22.20 x 1.60 (19.00 – ID)	6063T6	0,284	6,000
25.40 x 1.20 (23.00 – ID)	6063T6	0,251	6,000
25.40 x 1.60 (22.20 – ID)	6063T6	0,328	6,000
25.40 x 3.18 (19.04 – ID)	6063T6	0,601	6,000
28.58 x 1.1 (26.15 – ID)	6063T6	0,260	6,000
31.76 x 1.62 (28.52 – ID)	6063T6	0,416	6,000
31.70 x 3.18 (25.40 – ID)	6063T6	0,774	6,000
35.00 x 1.60 (31.72 – ID)	6063T6	0,455	6,000
38.10 x 1.50 (35.10 – ID)	6063T6	0,467	6,000
38.10 x 3.18 (31.74 – ID)	6063T6	0,945	6,000
45.00 x 2.00 (41.00 – ID)	6063T6	0,732	6,000
50.80 x 1.62 (47.56 – ID)	6063T6	0,678	6,000
50.80 x 3.18 (44.44 – ID)	6061T6	1,289	6,000
50.80 x 4.78 (40.00 – ID)	6061T6	1,871	6,000
60.32 x 3.92 (52.48 – ID)	6063T6	1,883	6,000
63.50 x 2.50 (58.50 – ID)	6063T6	1,298	6,000
76.10 x 1.27 (74.00 – ID)	6063T6	0,810	6,000
76.20 x 3.18 (69.84 – ID)	6061T6	1,976	6,000
88.90 x 4.78 (79.34 – ID)	6061T6	3,420	6,000
101.60 x 3.20 (95.20 – ID)	6061T6	2,728	6,000
107.96 x 3.20 (101.56 – ID)	6063T6	2,832	6,000
127.00 x 3.50 (120.00 – ID)	6063T6	3,678	6,000
169.28 x 3.70 (161.88 – ID)	6063T6	5,214	6,000
Outer Diameter x Wall Thickness (ID) = Inner Diameter			Length

Aluminium Square Tubes are easily fabricated into cubic or box structures and are an ideal component for rack building or window frames.

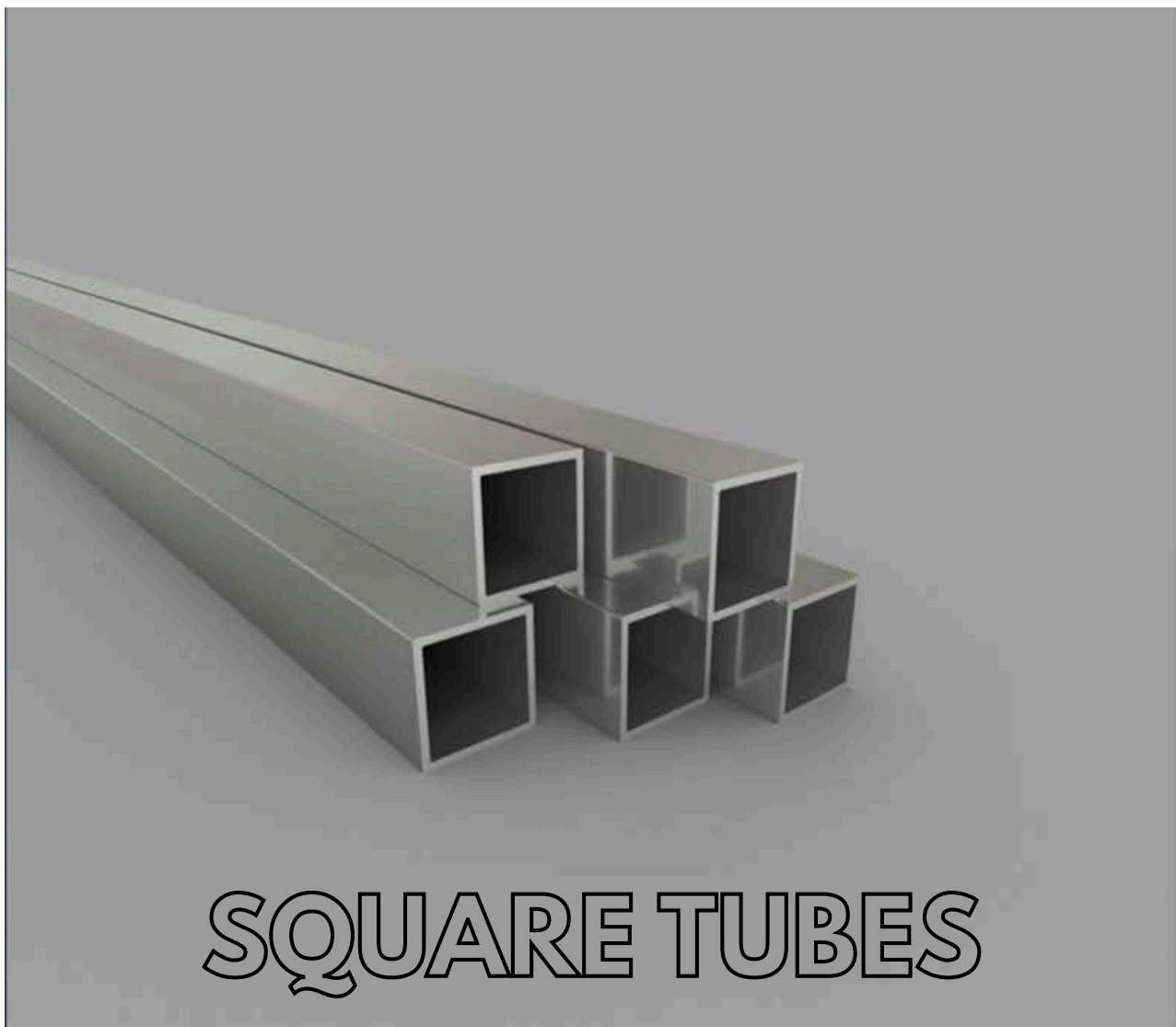
All our Square Tubes are available in alloy grade 6063 T6, a medium-strength alloy also known in the metal industry as an 'architectural alloy'. This material has excellent corrosion resistance making it ideal for outdoor use.

DIMENSIONS (mm)	ALLOY	MASS (per/m)	LENGTH (m)
12.00 x 12.00 x 1.60	6063T6	0,189	6,000
15.88 x 15.88 x 1.57	6063T6	0,244	6,000
19.06 x 19.06 x 1.62	6063T6	0,299	6,000
25.40 x 25.40 x 1.20 SC	6063T6	0,314	6,000
25.40 x 25.40 x 1.20 RC	6063T6	0,284	6,000
25.40 x 25.40 x 2.00 RC/SC	6063T6	0,491	6,000
25.00 x 25.00 x 3.26	6063T6	0,745	6,000
31.70 x 31.70 x 1.60	6063T6	0,523	6,000
31.70 x 31.70 x 3.18	6063T6	0,985	6,000
38.10 x 38.10 x 2.04	6063T6	0,791	6,000
38.10 x 38.10 x 3.18	6063T6	1,203	6,000
50.80 x 50.80 x 2.03	6063T6	1,026	6,000
50.80 x 50.80 x 3.26	6063T6	1,680	6,000
60.00 x 60.00 x 3.00	6063T6	1,854	6,000
78.00 x 78.00 x 2.00	6063T6	1,656	6,000
100.00 x 100.00 x 2.00	6063T6	2,125	6,000
114.50 x 114.50 x 2.00	6063T6	2,441	6,000
150.00 x 150.00 x 2.0	6063T6	3,997	6,000

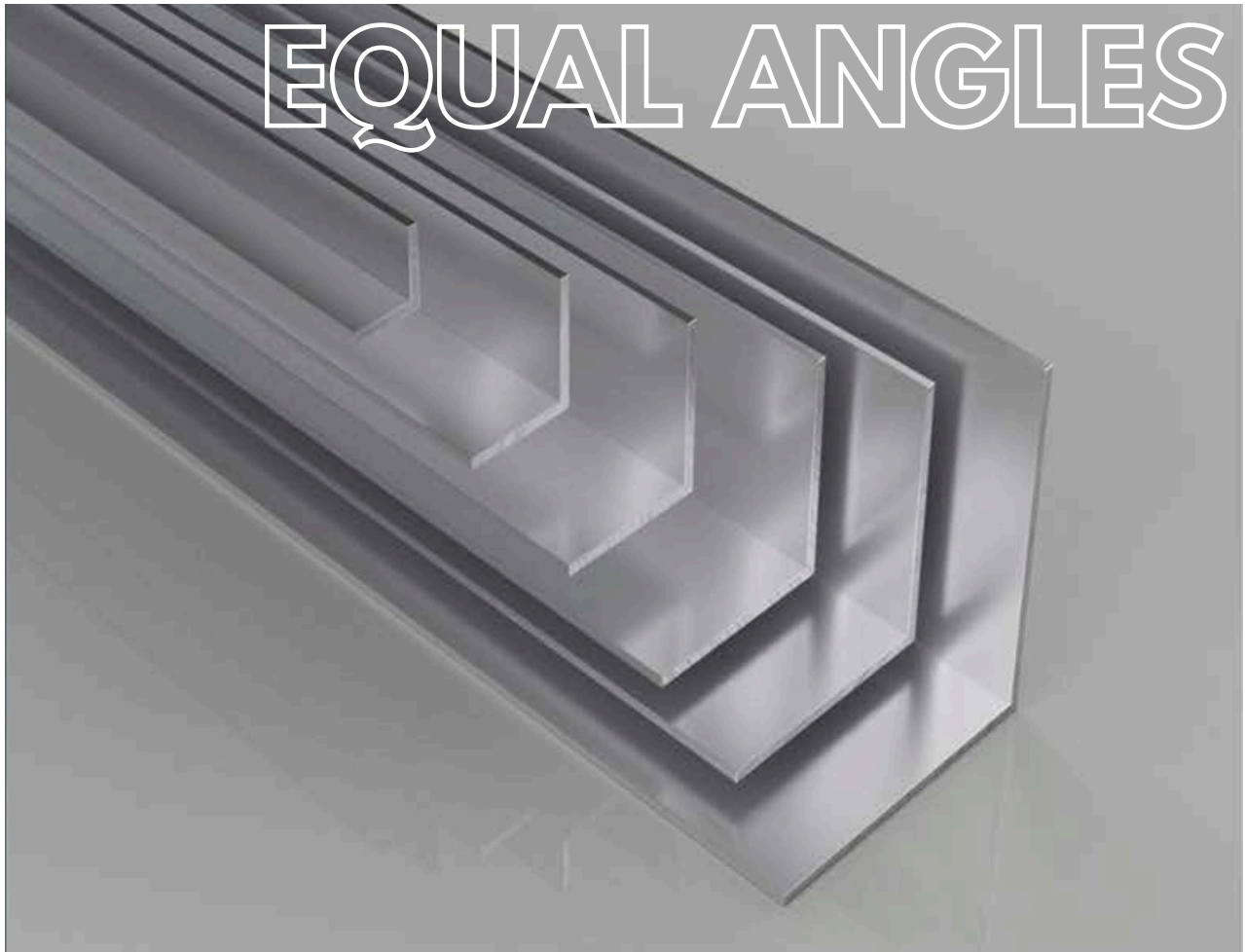
Width x Height x Wall Thickness

Length

We supply our Aluminium Square Tubes in a standard length of 6m with the option to 'cut-to-size'



EQUAL ANGLES



Aluminium Equal Angles are used predominantly to contain, protect, reinforce and support various surfaces.

The smaller angles are ideal for small projects, including wall corners, counters and worktop edges. Our Equal Angles are available in alloy grade 6063 T6 and 6061 T6 as a standard. These extrusions provide excellent corrosion resistance and a great surface finish.

We supply all our Equal Angles in a standard length of 6m with the option to 'cut-to-size'

DIMENSIONS (mm)	ALLOY	MASS / M	LENGTH (m)
12.70 x 12.70 x 1.57	6063T6	0,101	6,000
12.70 x 12.70 x 3.18	6063T6	0,191	6,000
15.00 x 15.00 x 1.50	6063T6	0,123	6,000
15.00 x 15.00 x 3.18	6063T6	0,246	6,000
19.06 x 19.06 x 1.60	6063T6	0,157	6,000
19.06 x 19.06 x 3.18	6063T6	0,303	6,000
25.40 x 25.40 x 1.52	6063T6	0,203	6,000
25.40 x 25.40 x 3.18	6063T6	0,410	6,000
25.40 x 25.40 x 6.36	6061T6	0,766	6,000
31.70 x 31.70 x 1.60	6063T6	0,268	6,000
31.70 x 31.70 x 3.18	6063T6	0,519	6,000
31.70 x 31.70 x 6.36	6061T6	0,985	6,000
38.10 x 38.10 x 2.04	6063T6	0,409	6,000
38.10 x 38.10 x 3.18	6063T6	0,629	6,000
38.10 x 38.10 x 6.36	6061T6	1,203	6,000
50.00 x 50.00 x 2.00	6063T6	0,531	6,000
50.80 x 50.80 x 3.18	6063T6	0,848	6,000
50.80 x 50.80 x 4.74	6063T6	1,243	6,000
50.80 x 50.80 x 6.36	6061T6	1,639	6,000
76.00 x 76.00 x 2.00	6063T6	0,813	6,000
76.20 x 76.20 x 3.18	6063T6	1,286	6,000
76.20 x 76.20 x 4.78	6063T6	1,912	6,000
76.20 x 76.20 x 6.36	6061T6	2,513	6,000
100.00 x 100.00 x 3.00	6061T6	1,602	6,000

Leg 'A' Width x Leg 'B' Width x Leg Thickness

Length